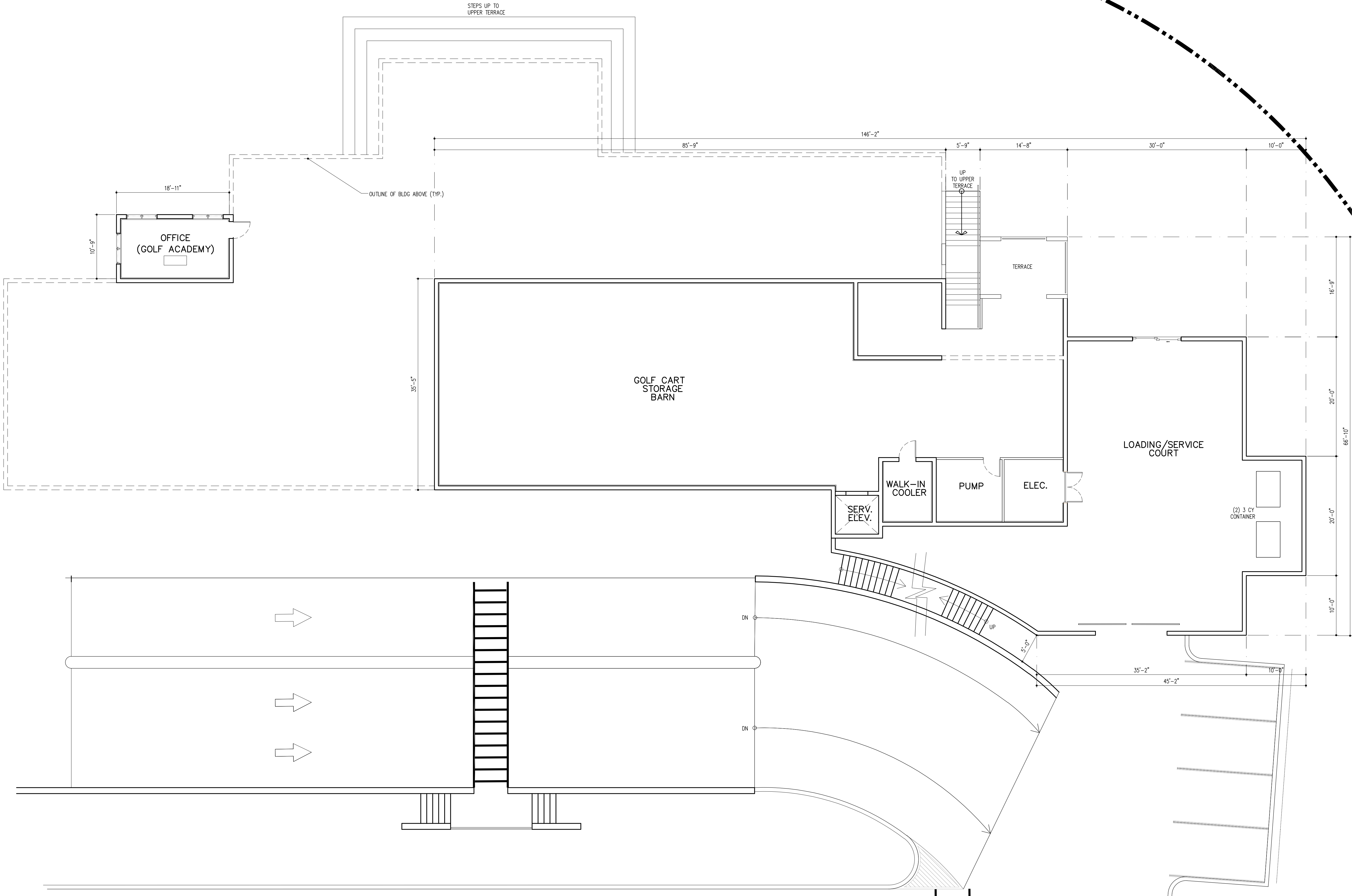


PZ23-12000017  
09/20/2023



# GOLF CLUB CLUBHOUSE SERV. LV FLOOR PLAN

A/C AREA = 3.562 SQ.FT.  
TERRACE AREA = 469 SQ.FT.  
TOTAL GROSS = 4, 255 SQ.FT.

SCALE:  $1/8" = 1' - 0'$

DRAWN	
CONTRACT DATE	10/12/22
SCALE	AS SHOWN
JOB NO.	2181.PRJ

SHEET TITLE:  
GOLF CLUB  
CLUBHOUSE SERV. LV.  
FLOOR PLAN

SHEET NUMBER:  
**GCH-2.2**

MSA ARCH  
AAC000895

8950 SW 74th COURT  
SUITE 1513  
MIAMI, FLORIDA 33156  
(305) 273-9911

**MSA**  
**ARCHITECTS**  
ARCHITECTURE & PLANNING

© 2022 MSA ARCHITECTS, INC. THE ARCHITECTURAL, DESIGN AND DETAIL DRAWINGS FOR THIS PROJECT ARE SOLELY THE PROPERTY OF MSA ARCHITECTS, INC. NO PART OF THIS DOCUMENT IS TO BE REPRODUCED OR TRANSMITTED IN ANY FORM OR BY ANY MEANS, ELECTRONIC OR MECHANICAL, WITHOUT PERMISSION IN WRITING FROM MSA ARCHITECTS, INC.

MSA ARCH  
AAC000895

8950 SW 74th COURT  
SUITE 1513  
MIAMI, FLORIDA 33156  
(305) 273-9911



JOSE I. SAUMELL  
AR0013085

OAKS @ PALM AIRE  
FOR:  
MORGUARD  
LOCATED AT:  
POMPANO BEACH, FLORIDA

PRE-APP MEETING 04/04/2023	
----------------------------	--

DRC SUBMITTAL	
06/13/2023	

DRC RE-SUBMITTAL	
08/16/2023	

--	--